

AVO TENT
COMPETITION



Hosted by the

Western Bay Museum
The *small* museum that tells a *big* story

Pit Stop

It's the pits!



KATIKATI AVOCADO FOOD & WINE FESTIVAL

Saturday 13th January 2018



For inquiries please contact Paula or Lulu at the
Western Bay Museum
on 07 549 0651 or email: info@westernbaymuseum.nz
The Old Fire Station, 32 Main Road, Katikati, 3129

General Rules:

- All entries to be on an official form (see back of schedule)
- All entries will be made or created by the named exhibitor
- All entries must be homemade and ready for tasting by 12 noon on the day
- Presentation of awards will be at 3.30pm on the day
- A maximum of **1 ENTRY** by one individual exhibitor **PER CATEGORY**
- **PEOPLES CHOICE** decide the winner and is final! No correspondence will be entered into
- Food ingredients must be listed and supplied with your entry

AGE CATEGORIES:

Children - Under 10 Teenagers - 11-16

Adults - 16+



Competition Time

Food

Category 1: Smoothies

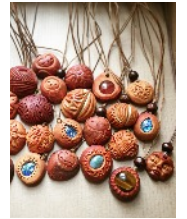
Get creative and enter the smoothie making competition! Any ingredients but you must have a minimum of 1 whole avocado and provide 1 litre of drink!

Category 2: Desserts

Make succulent desserts for the public to taste and vote! Must have avocado! Yum!

Category 3: Guacamole

Your good ole favourite! Make your favourite guacamole and see if its a winner?



Let's Get Crafty

Category 4: Avocado Pit Jewellery

Dry then carve or paint the pit to create something beautiful! Add shells or beads! Get those creative (avo) juices flowing!

Category 5: Pit Decorating

Fun for all! Paint or carve a pit, use a toothpick to make holes? See what works but have fun!

Category 6: Avocado Pit Windchimes

Make a windchime using avocado pits. Use whatever you find but it must have pits in the design!



KATIKATI AVOCADO FOOD & WINE FESTIVAL

Saturday 13th January 2018

AVO TENT COMPETITION ENTRY FORM

Surname:	First Name:	Entry No: OFFICE USE ONLY
-----------------	--------------------	-------------------------------------

Address:

Phone No:	Email:
------------------	---------------

Category No. Max 1 entry by 1 individual per category	Description	Placing 1st & 2nd OFFICE USE ONLY	Prize OFFICE USE ONLY

Entries (exhibits) and entry form are to be delivered to the festival on Saturday 13th January, between 11am - 12 noon

NO ENTRIES ACCEPTED AFTER 12 NOON SATURDAY 13TH JANUARY 2018